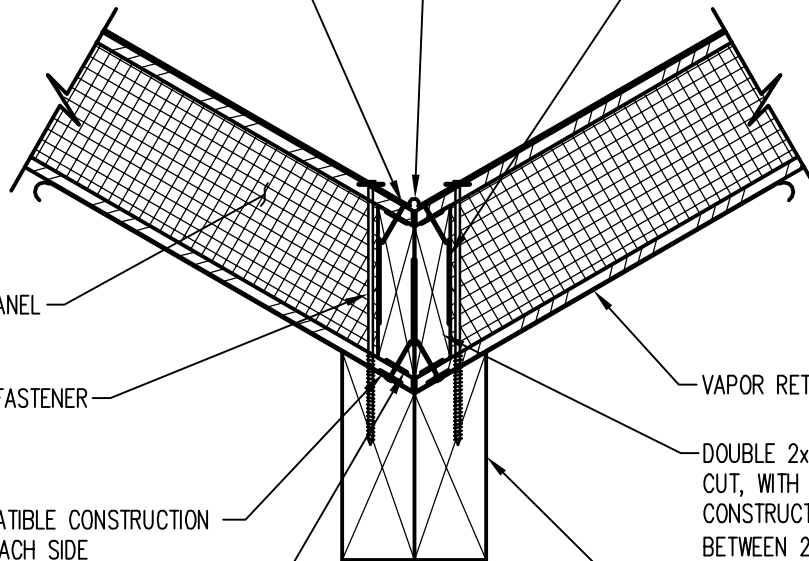


FASTEN WITH 8d NAILS OR 14GA.
 1½" MIN./ 1¾" RECOMMENDED,
 ½" CROWN STAPLES @ 6" O.C.,
 BOTH SIDES OF PANEL JOINT OR
 EQUIVALENT. TYP. EA. SIDE OF PANEL

VALLEY FLASHING

FOAM COMPATIBLE
 CONSTRUCTION ADHESIVE,
 EACH SIDE



SIP ROOF PANEL

SIP SCREW FASTENER

FOAM COMPATIBLE CONSTRUCTION
 ADHESIVE, EACH SIDE

FOAM COMPATIBLE CONSTRUCTION
 ADHESIVE, EACH SIDE, TOP & BOTTOM

VAPOR RETARDER

DOUBLE 2x SPLINE, BEVEL
 CUT, WITH FOAM COMPATIBLE
 CONSTRUCTION ADHESIVE
 BETWEEN 2x'S

STRUCTURAL SUPPORT MEMBER
 WITH MIN. 3" BEARING FOR
 PANELS EACH SIDE OF JOINT



SURETIGHT
 INSULATED PANELS

BUILD SMARTER. LIVE BETTER.

SHEET TITLE:

ROOF VALLEY – PLUMB CUT

SCALE:

NTS

LAST UPDATED:

12-06-05

SHEET NO:

SIPS-17